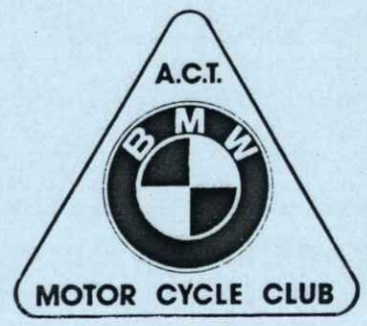




MONTHLY
JOURNAL
OF THE



P.O. BOX 1042,
WODEN
A.C.T. 2606

COMMITTEE

PRESIDENT :- WERNER STROTMANN PH. 864057 (H)
VICE PRESIDENT :- MIKE HOUSTON PH. 889609 (H)
SECRETARY :- MARK COGLAN PH. 318059 (H) 684910 (W)
TREASURER :- URSULA STROTMANN PH. 864057 (H)
TOURING SECRETARY :- BOB RUMSEY PH. 919329 (H) 733777 (W)
SOCIAL SECRETARY :- FRANK MILLWOOD PH. 957403 (H) 633799 (W)
EDITOR :- JENNI COLE PH. 816559 (H) 887508 (W)

LIBRARIAN :- FRANK MILLWOOD
TOOLS OFFICER :- FRANK MILLWOOD

CLUB ACTIVITIES

GENERAL MEETINGS SECOND MONDAY OF THE MONTH FROM 7.45PM,
ROYALS RUGBY FOOTBALL CLUB, LIARDET ST, WESTON
CLUB RUNS FIRST WEEKEND OF THE MONTH (SAT. OR SUN.)
MEET AT WESTON MOTOR CYCLES. SEE "WHAT'S ON" PAGE
SOCIAL EVENTS AS ARRANGED. WATCH "MINUTES" & "WHAT'S ON" PAGES.
KOSCIUSKO RALLY FIRST WEEKEND IN OCTOBER,
KOSCIUSKO NATIONAL PARK, GEEHI HUT CAMPSITE.

MEMBERSHIP FEES - SINGLE \$10 JOINT \$12 ASSOCIATE \$10 / \$12

DISCOUNTS

WESTON MOTOR CYCLES
49 BRIERLY STREET, WESTON
PH. 888747

GENGE MOTOR CYCLES
7 LONSDALE STREET, BRADDON
PH. 497923

PADDY PALLIN
46 NORTHBOURNE AVE, CIVIC.
PH. 478949
(DISCOUNT AVAILABLE ON PURCHASES
TOTTALLING OVER \$300)

CIVIC ENGRAVING & LOCK
SERVICES PH. 572727
SHOP 3, BOULEVARDE GALLERY,
CIVIC PERMANENT CENTRE,
UPPER LEVEL, CIVIC

*****PLEASE SHOW YOUR MEMBERSHIP CARD*****

FRONT COVER : A familiar sight to most of us.

WATSON

- AUG 24
(SAT) SOCIAL SIP - Ambassador Hotel, Mawson -
Red Lantern Restaurant, upstairs 7.30pm.
- AUG 24 - 25 Sidecar & Enthusiasts Rally, near Hill End
via Bathurst.
- AUG 24 - 25 Thor Rally, Central VIC.
- AUG 31 - 1 Puma Rally, near Balmoral, VIC.
- AUG 31 - 1 Velocette Enthusiasts Rally, Bundanoon, NSW
- SEP 1
(SUN) CLUB RUN, Young NSW. Meet at 9.30 at Weston.
BBQ lunch at Richard Gordon's property. BYO.
Contact Touring Secretary for directions or be at
Weston.
- SEP 7 - 8 Dargo High Plains Rally, near Dargo, VIC.
- SEP 7 - 8 Wombat Rally, near Braidwood, NSW.
- SEP 9 GENERAL MEETING, Royals Rugby Football Club, Weston.
7.45pm.
- SEP 14 - 15 Blacknight Rally, near Swan Hill, VIC.
- OCT 5 - 7 KOSCIUSKO RALLY.
- OCT 5 - 7 Outfit Rally, VIC.
- OCT 5 - 7 Worlds End Rally, Quorn, SA.
- OCT 14 GENERAL MEETING, Royals Rugby Football Club, Weston.
7.45pm.
- OCT 12 - 14 Rally 'Round the Bend, Overland Corner, near Barmera,
SA.
- OCT 12 - 13 Thunder Rally, Lake Cargelligo, NSW.
- OCT 26 - 27 King River Rally, VIC.
- NOV 2 - 3 CLUB RUN, Trip to Coast, staying at a Hotel,
Details to be advised.
- NOV 2 - 4 100th Anniversary Rally, Phillip Island, VIC.

IT'S ALL A MATTER OF
PERSPECTIVE

BLESSED ARE THEY WHO HUNGER AND THIRST,
FOR THEY ARE STICKING TO THEIR
DIETS. TROY GORDON.

MINUTES OF GENERAL MEETING

12 AUGUST 1985

Meeting opened at 8.10pm at Royals Rugby Football Club, Weston with 21 members and 3 visitors (Walter Bagmarol, Andrew Grant and Paul Schwager) present. Five apologies were received. Welcome to new member Stan Jones.

MINUTES of July General Meeting accepted as published. Moved by Frank Millwood, seconded by Moff.

CORRESPONDENCE

OUT : Stolen BMW advice to interstate Clubs
100,000-on-one request for latest progress

IN : Magazines Qld, NSW, VIC, SA.
Letter from Michael Bachmann (Wagga).

BUSINESS

- . Reports given by various committee members
- . Club jumpers to be only purchased by club members
- . Constitution to be revised by three committee members for publication in Journal and vote at September meeting - for Incorporation purposes
- . Kosciusko Rally volunteer sub-committee formed - Ian & Jeanette Hahn, Moff, Chris Fulker, Peter Oliver.

GENERAL BUSINESS

- . Social Sip decided as Saturday 24 August, Ambassador Hotel, Mawson, meet 7.30pm.
- . BMW Car Club newly formed - agreed to contact, suggest some interaction
- . Country pub survey reported by Moff, will report further in Journal on best choice for November coast weekend activity
- . Slide (weekend) night proposed at Moffs's place, date to be notified
- . 4B's organisation update report by Garry Colcott - call for volunteers
- . Maintenance day discussed - time and place to be scheduled

NEXT MEETING 9 September

NEXT RUN 1 September (see What's On page)

Meeting closed at 9.10pm

Current membership is 60.

Mark C.
13 August 1985

ANSWERS TO LAST MONTH'S BMW HISTORY & PERSONALITY QUESTIONS -

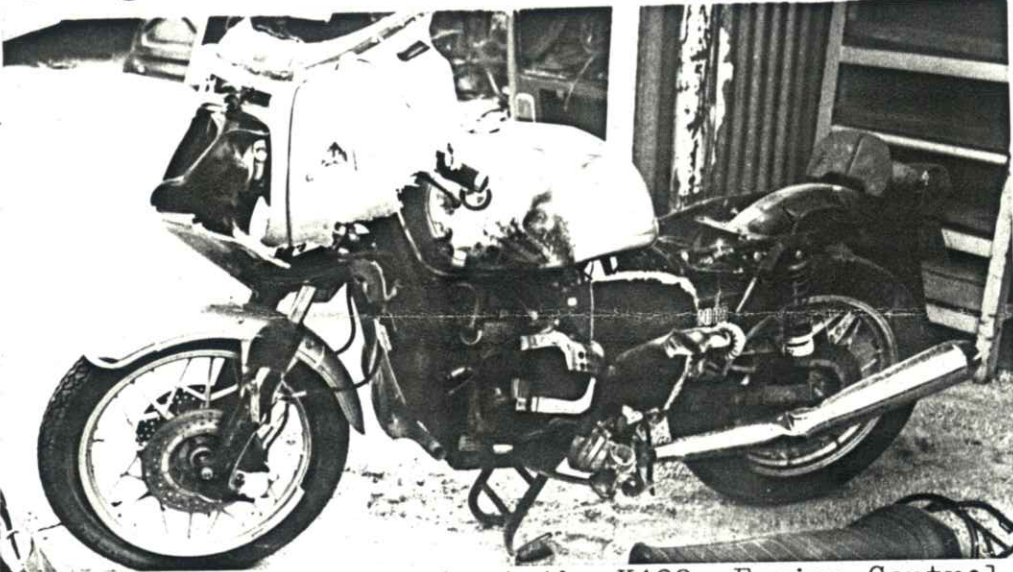
1. c) 1973 the year the /6 bikes were released.
2. d) Max Friz, who designed the R32 which was the first true BMW.
3. b) Walter Zeller, who was a works rider for BMW and was runner up to John Surtees that year.
4. e) Telescopic fork, as all other bikes that time had Earles fork.
5. d) R90S, which was released in 1973.

MORE QUESTIONS TO BE FOUND LATER IN THIS MONTH'S JOURNAL.

A NOTE FROM THE PREZ

On Sunday the 18th of August a group from the club went to Wagga to visit fellow member Michael Bachmann, to see how he's getting on after his terrible accident. We found him quite happy, with a slight limp, but otherwise healthy.

He showed us some pictures of his demolished bike and I must say he is lucky to be alive. Michael said that he is looking forward to seeing us all on the next club run to Young in September.



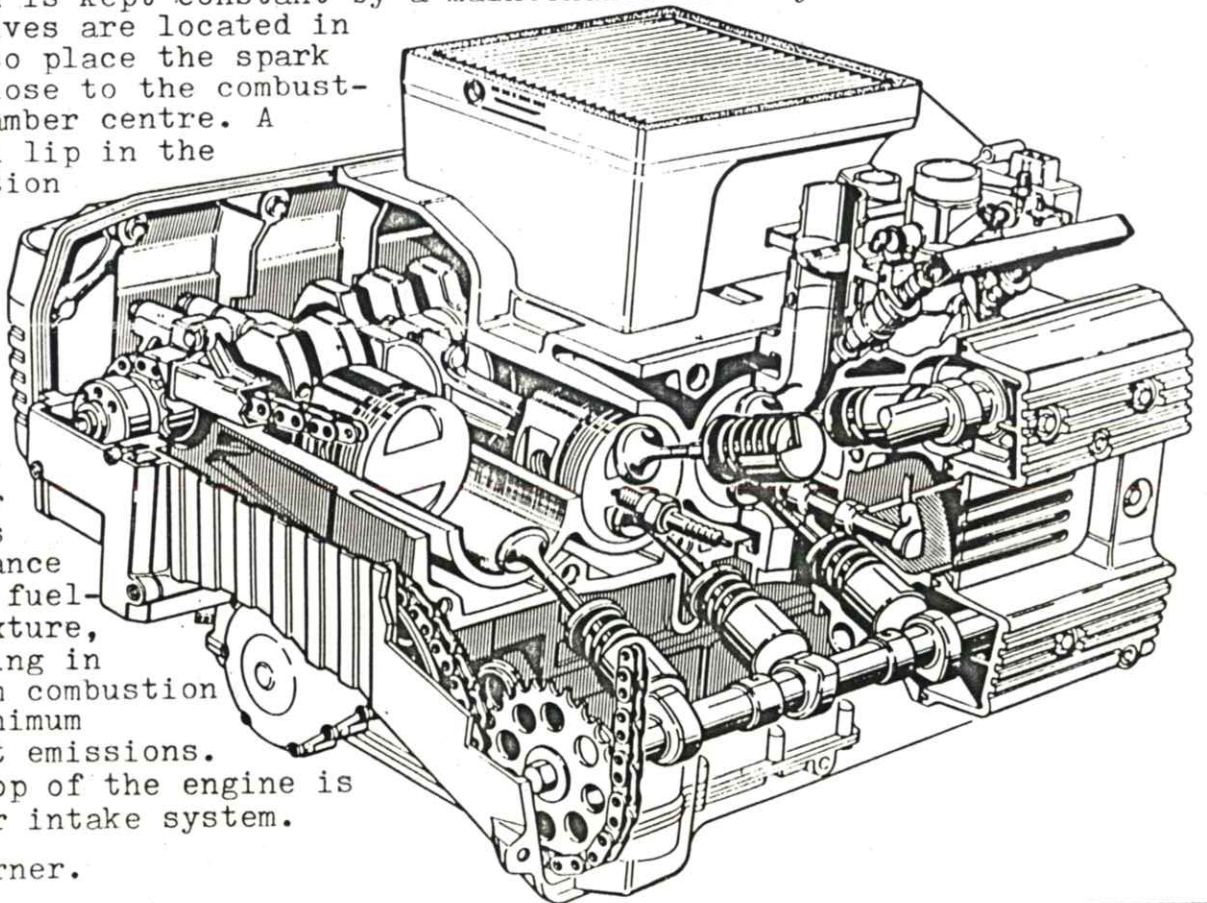
The sad remains of Michael's former R100RS.

And now, a bit more about the K100; Engine Control. Two overhead camshafts operate the valves by clearance-adjusting plates and bucket pattern tappets. Of the two valves per cylinder the exhaust valve is of high strength heat-treated steel. The camshafts are driven by an endless single roller chain from the crankshaft. The tension is kept constant by a maintenance-free hydraulic tensioner. The valves are located in order to place the spark plug close to the combustion chamber centre. A special lip in the combustion

chamber creates turbulence in the fuel-air mixture, resulting in optimum combustion and minimum exhaust emissions.

On top of the engine is the air intake system.

Werner.



CLASSIFIEDS

FOR SALE

R100RS, 1983, FITTED WITH
 KRAUSER PANNIERS, FOURNALES
 SUSPENSION, KICK START &
 LGE TOOL SET.
 \$ 4,200 o.n.o. 472724
 PETER ROBLESKI

2 PERSON TENT, A-FRAME &
 FLYSHEET
 \$ 30 PETER OLIVER 472724

POLICE TYPE CRASH GUARDS
 SUIT /7 OR LATER. \$ 20
 PAINT - TOUCH UP KIT - BLUE,
 FOR /7 SERIES.
 BILL BROWN W. 454493
 H. 547220

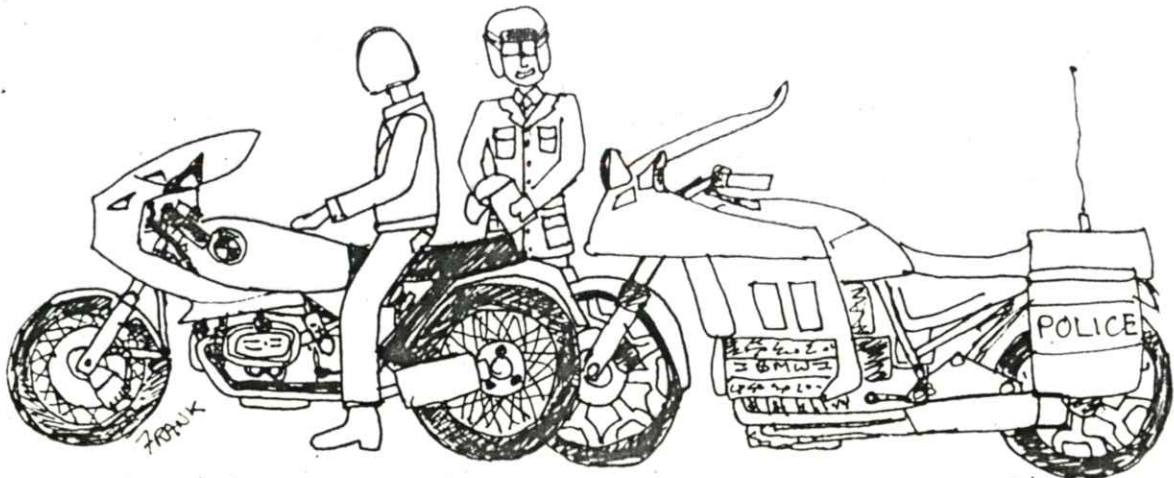
CLUB JUMPERS (NAVY STYLE) \$ 30
 INCLUDING CLUB PATCH,
 ORDERS TAKEN. URSULA 864057

KRAUSER 4 VALVE HEADS &
 MATCHED PISTON SET
 (1ST OVERSIZE) 18% TO 20%
 POWER INCREASE, (TO 83 HP AT
 7300 RPM), FLATTER TORQUE
 CURVE, (TO 84 NM AT 4000 RPM)
 REDUCED VIBRATION, IMPROVED
 FUEL CONSUMPTION, HIGH
 QUALITY CONSTRUCTION,
 NORMALLY \$ 1700 PLUS,
 ONLY \$ 1400 o.n.o.

MICHEAL BACHMANN
 (069) 233233 EXT 3756 (A.H.)

HOLDEN CAMIRA '83, 5 SPEED,
 AIR CONDITIONING, 30,000 KMS,
 RUST PROOFING, 10 MTHS REGO,
 TOW BAR, VERY ECONOMICAL.
 GARRY COLCOTT W. 655187

BMW 2000TI 4 DOGR SEDAN, \$6000
 FULL DETAILS - CHRIS W. 685614



OFFICER: 'WHO DO WE THINK WE ARE, GREGG HANSFORD?'

RIDER: 'THAT OLD FOGIE! I COULD RUN RINGS AROUND HIM
 ON THIS LITTLE BABY.'

THE BONANG HIGHWAY by Moff

Next time you're travelling north from far east Gippsland or south of Cooma, and have a little time up your sleeve, check out the Bonang.

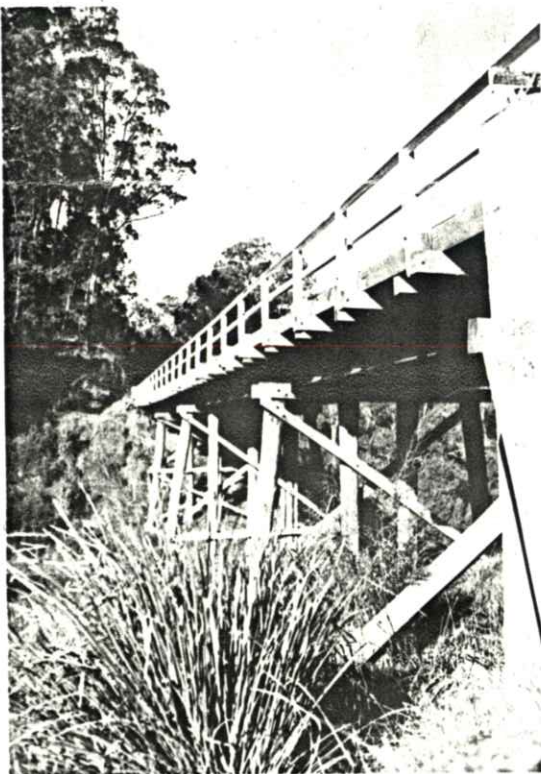
The only tar to speak of is the fast stretch on the northern end, from Bombala to Delegate, across the high plains, and about 30km north of Orbost where you have a winding race track. This southern end is the best by far, where you are guaranteed a chance to 'reshape' your footpegs. The Bonang can be a hot, dusty blast in summer, enough to bring on a yearning thirst, or a potential freeze in winter, more so if there is snow above, on the alps.



On Monday the 27th of May we left Orbost and headed for Canberra with the afternoon set aside for a leisurely look at the Bonang. After a good counter lunch at the Commonwealth Hotel in Orbost, there was no rush intended! My back tyre was well and truly worn out so the handling in corners is best not described, though memorable for anyone following. If this wasn't enough, I was later to find out that the back wheel had four broken spokes. Just enough to flex it a little more!

Didn't see much of Bob as we headed north into the endless bends of the Bonang, until a very scenic spot called Sardine Creek where we stopped for photography. A trestle bridge dominates this small opening in the forest and is worth a stop.

As quickly as you fly into this area you're out of it and surrounded by heavy timber and lush fernery. The road surface now is continually changing and so is your speed. If tight corners don't keep you on edge, then the efforts of a Country Roads Board grader will. Even on a perfectly



Bonang Hwy. continued ;

dry day you can encounter mud as there are numerous springs exposed through the road surface. They make for exciting and dangerous skid pans.

The town of Bonang is in a long undulating valley spotted with cattle and various farming and forestry buildings. It has a general store, complete with petrol, along side a short stretch of tar which abruptly ends once you leave the valley. We stopped briefly in a national park through which the highway takes you and luckily it was well timed for the only logging truck seen, to pass us.

There are a number of interesting old farmhouses to be seen on the Bonang, also close to it and worth examining, is a disused sawmill. Long out of use and salvaged of many of its features, there stands an old boiler, water tower and some heavy machinery close to the road. You can only ponder, walking amongst it, what must have been there in its heyday.



continued next page -

BMW HISTORY AND PERSONALITY QUIZ - PART 2

1. Who won the Isle of Man Senior TT in 1939 for BMW ?

a) Jock West	b) Dick Seaman	c) Georg Meier
d) Walter Zeller	e) Karl Gall	
2. In what year was the R68 released ?

a) 1949	b) 1960	c) 1937	d) 1952	e) 1955
---------	---------	---------	---------	---------
3. What BMW model was the first with telescopic forks ?

a) R51	b) R75/5	c) R42	d) R67	e) R12
--------	----------	--------	--------	--------
4. In what year was the first telescopic fork fitted to a BMW ?

a) 1935	b) 1952	c) 1955	d) 1970	e) 1932
---------	---------	---------	---------	---------
5. How many times did BMW win the Sidecar World Championships ?

a) 19	b) 22	c) 11	d) 5	e) 7
-------	-------	-------	------	------

ANSWERS - next month

Bonang Hwy. continued;

Having left Orbost at around one o'clock, our arvo was nearly spent, like tourists going for their money's worth. A low sun saw us crossing countless shadows as we headed into Delegate. You could also feel the temperature dropping on each crest. By the time I had fitted whatever items that I could find for warmth, the sun had gone and didn't we know it! The Cooma roadhouse became an extended stop, who cares how long you stay in one when its freezing outside? Say no more.

Anyhow, a good ride and thoroughly recommended for those who don't mind getting their bikes dirty!



September CLUB RUN

Sunday 1st
to YOUNG

meeting at 9.30 am
at Weston Motor Cycles

BYO - BBQ Lunch

see details - What's on page.

CLUB PERSON OF THE YEAR 1985/86 POINTS AWARD SYSTEM

Meetings and Runs

- 5 Monthly General Meeting (or 2 for apology given)
- 5 Club day Run on bike (or 3 if in car)
- 3 for partial attendance, bike (or 2 if in car)
- Club weekend Run
- 5 for day 1 on bike (or 2 if in car)
- 3 for day 2 on bike (or 1 if in car)

Rallys

- 10 Kosciusko
- 8 Club Run
- 3 others (show proof)

Social

- 3 Social Sip
- 3 other event/ evening (additional 2 if hosted)

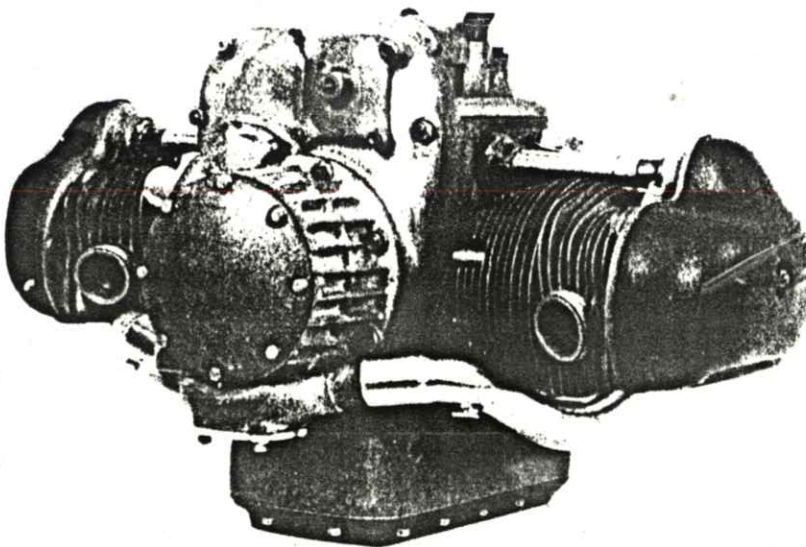
Journal

- 3 each article, item, photo, and so on

Bonus

Maximum 5 for special assistance, at Committee's discretion

NB. POINTS ACCRUED AS AT MARCH 1985 A.G.M. UP TO BUT EXCLUDING 1986 A.G.M.



COURTESY CLASSIC BIKE
JUNE 1985

BMW'S KOMPRESSOR ENGINE
IN ITS 1939 FORM.
THE ZOLLER TYPE SUPERCHARGER
WAS DRIVEN BY AN EXTENSION
OF THE CRANKSHAFT.
BEVEL GEAR DRIVEN OVERHEAD
CAM 500 CC.
A KOMPRESSOR SET A WORLD
SPEED RECORD OF 173.67 MPH
IN 1937.

4B's - Bent Buckled Bikers Brigade of Canberra

Hospital Visiting Guidelines

The first thing to remember is that you are a visitor to the wards. You are there on sufferance from both staff and patients. Be diplomatic, tactful and most important - polite.

Always wear your 4B's tag, this lets the staff know you are an official 4B's representative. When you are available to visit the hospital please contact either myself (W. 655187) or Laura Farrell - 4B's Coordinator (W. 898609 H. 547579).

Remember we are here to make the stay in hospital of fellow bike riders less boring and hopefully more comfortable, but we are also representing motorcycle riders in general and we must present the best image possible.

On your first visit you will be accompanied by an experienced visitor so you can get the hang of things - location of wards etc. Experience has proven that visiting has its own rewards, so be relaxed and just be yourself when visiting; sometimes talking to a complete stranger can be easier than talking to someone you know who's layed up in a hospital bed.

4B's Standard Operating Procedure In Hospital

These procedures will enable the 4B's to function in an ethical and professional manner, thereby maintaining our good reputation and high degree of acceptance.

AIM : To provide all possible assistance to downed riders.

1. When meeting a patient for the first time, introduce yourself, tell them you are from the MRA 4B's, and explain your function. Ask if we can help in any way e.g. Has your bike been picked up ? Do you want anything to read ? Explain the horizontal sheet and reassure the patient that all information is confidential.
2. Recognise symptoms of distress regarding any particular subject and avoid discussion on same.
3. Be sensitive to the patient's needs and attitudes. Neither encourage or discourage from riding.
4. Be quiet and considerate in the hospital - our reputation depends on you.
5. Know the visiting hours, and although these are flexible for the 4B's try not to inconvenience either relatives or staff by getting in the way.
6. If a bike is to be picked up (e.g. from a towing contractor) make sure written authority and either rego papers or ownership papers are obtained from the owner/parents. I have a bike trailer for this purpose.
7. Don't neglect other downed bikers who may have been in hospital for some time.
8. We are not trained in any way. Social workers and nurses have the training to deal with special problems. All we can do is provide moral support through regular visits and refer them to professionals e.g. in cases where legal advice is required.

Garry Colcott

THE ULTIMATE TEST OF WHETHER YOU POSSESS A SENSE OF HUMOUR IS
YOUR REACTION WHEN SOMEONE TELLS YOU YOU DON'T.

FRANK TYGER.

THE TOURING SECRETARY'S BIT:

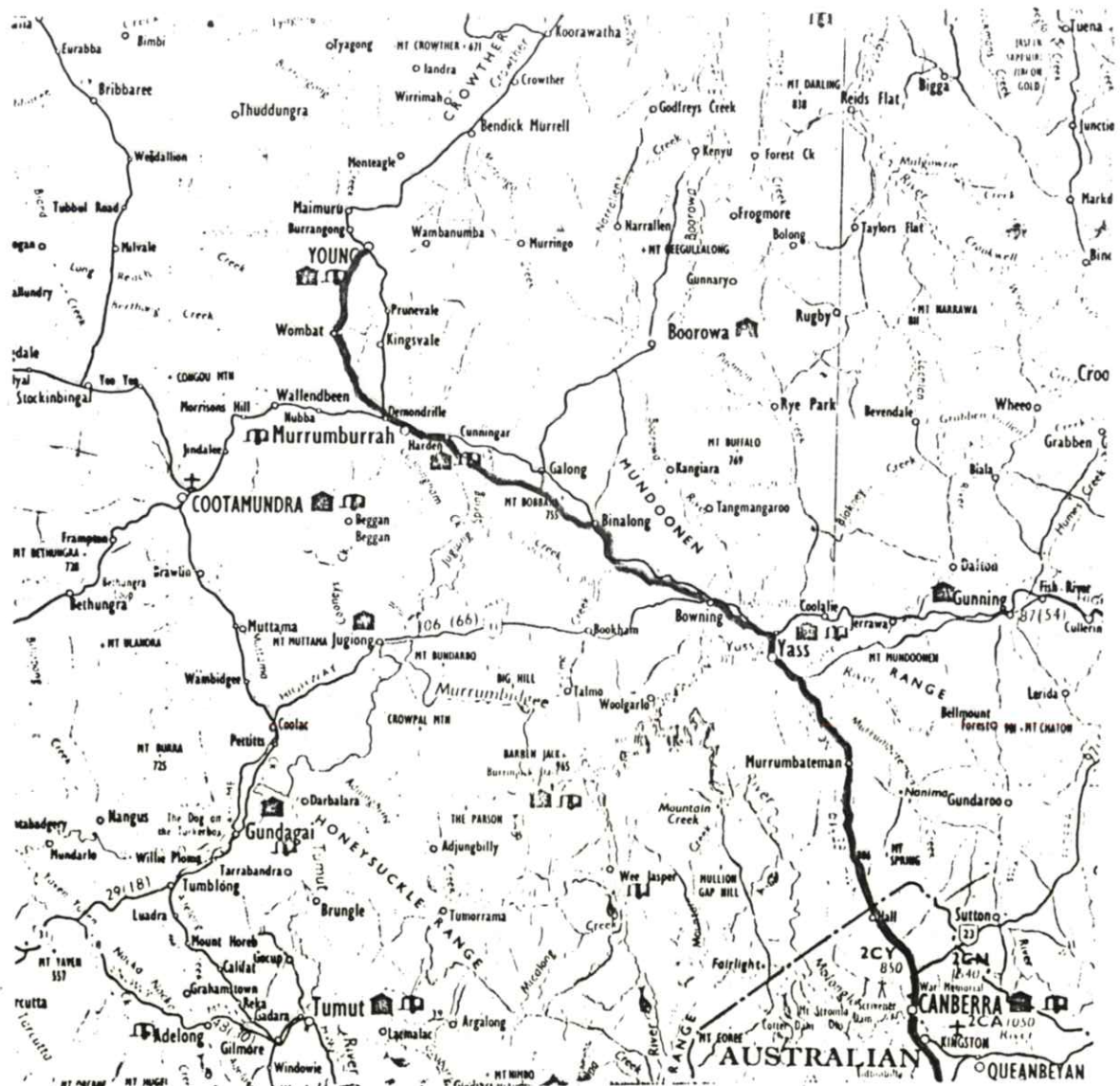
Preparations for this year's Kosciusko Rally are well under way. The committee has determined that the entry fee for club members this year will be \$2.50 each. An entry form is enclosed with this newsletter.

Details of the proposed route for the September club run to Young are set out on the map below. As it is the club's policy not to publish members' addresses, directions may be obtained by either phoning me or by being at Weston Motor-cycles at 9-30 am on Sunday the 1st of September. The exact destination is about 10km out of town.

The last club run, to Corin Dam, attracted quite a large group of members in spite of the cold weather and I hope to see another good rollup this time.

Total distance to Young is about 170km, approximately two hours riding time through some interesting little towns and very scenic countryside at this time of year.

Bob Rumsey.





The Australian Capital Territory BMW Motorcycle Club invites you to the fourth annual Kosciusko Rally to be held on the weekend of the 5th, 6th and 7th of October 1985. This is a holiday weekend in N.S.W. and A.C.T.

The rally will be at the Geehi Hut campsite in the Kosciusko National Park, at the junction of the Alpine Way and the Swampy Plain River about 35km from Khancoban and 43km from Thredbo. Unsealed roads will be encountered on both approaches to the site.

En route to the rally you will travel on some of Australia's most spectacular motorcycling roads and through the greatest alpine scenery in N.S.W.

Fuel and supplies are available at Jindabyne and Cooma and fuel and take-aways at Khancoban and Thredbo.

The Cabramurra to Khancoban road may be closed by snow. If so, detour via the Elliot Way near Cabramurra. Road conditions are posted at Jindabyne and Kiandra and are also available from the Cooma Visitors' Centre. Beware of icy roads if travelling at night.

The rally is a social weekend for motorcyclists and their families, accordingly the following are prohibited:

- *Four Wheeled Vehicles
- *Alcohol
- *Offensive Behaviour
- *Since we are in a National Park, dogs and other pets are prohibited by law.

Badges, tea and coffee will be provided on arrival. T-shirts and printing will be available. Awards for the following will be presented on Sunday morning, claims must be registered by Saturday night.

- | | | |
|---|--------------------------|-------------------|
| *Longest Distance Travelled | *Male | *Female |
| Direct From Home | *Sidecar | *Pillion |
| *Oldest Combined Age Of Rider and Machine | *Largest Club Attendance | *Youngest Entrant |
- *Special awards for BMW riders will also be presented.

ENTRY FEE for riders and passengers is \$5 each, children \$2-50 each and late entries \$1 extra. Entries should be posted to;

KOSCIUSKO RALLY
P.O. Box 1042,
WODEN, A.C.T. 2506

Cheques or money orders should be made payable to A.C.T. BMW MCC.

The organisers can accept no responsibility for any damage or injury incurred by those attending. Please ride carefully and beware of other traffic on the Alpine Way.

ENTRY FORM

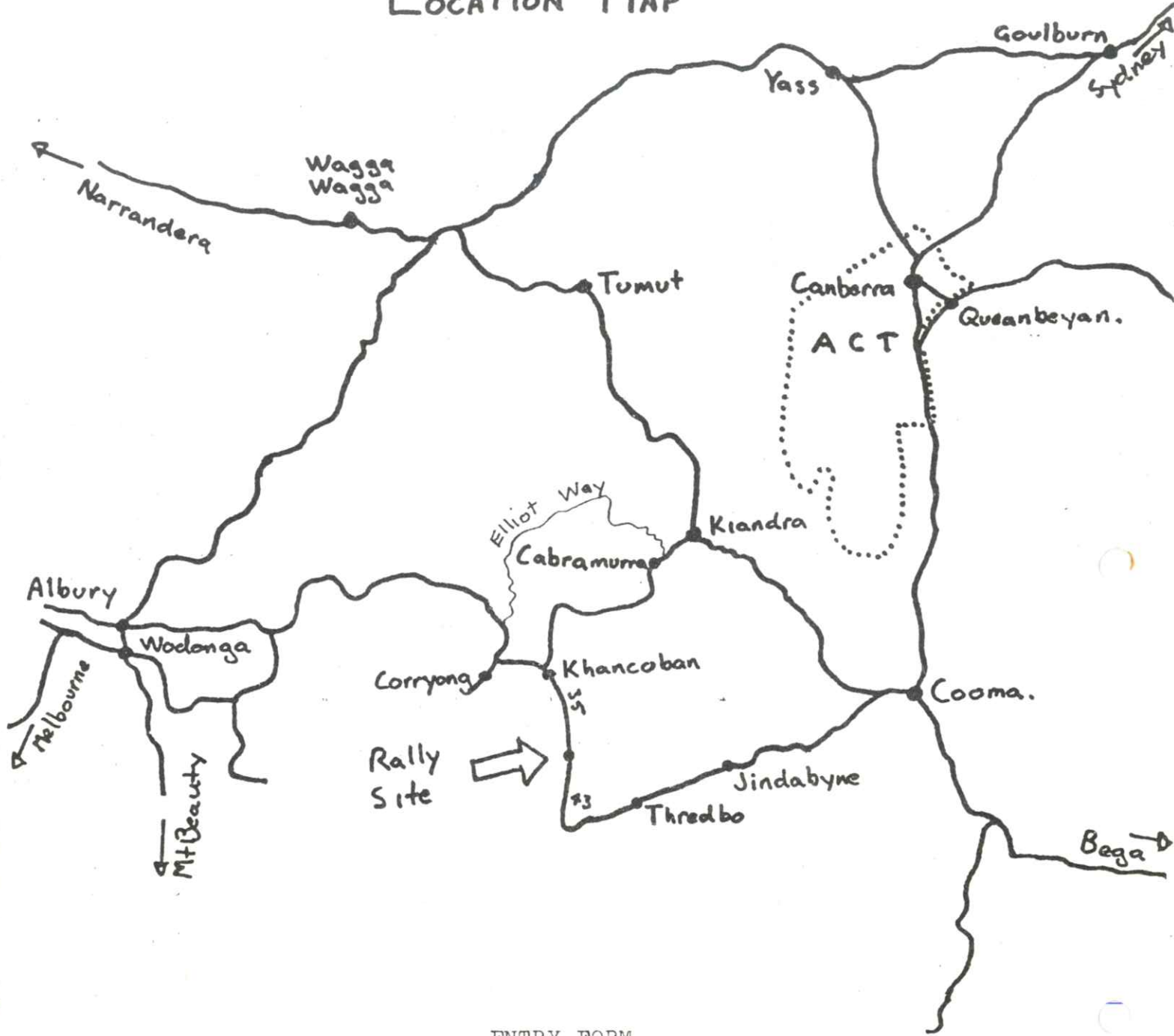
NAME

ADDRESS

CLUB MACHINE

PASSENGER CLUB

LOCATION MAP



ENTRY FORM

NAME
 ADDRESS
 CLUB MACHINE
 PASSENGER CLUB
 NAME
 ADDRESS
 CLUB MACHINE
 PASSENGER CLUB